

3 Other services of InBáze, z. s.



Intercultural work, Intercultural and Social streetwork

- Translations and interpreting; accompaniment to schools, offices, doctors, etc.
- Advice regarding different aspects of life in the Czech Republic
- Help with orientation in the Czech environment
- Information about services and activities available in the Czech Republic

Service may be provided in English, Russian, Spanish, Ukrainian and in other languages occasionally.

Booking in advance is necessary and may be done via mail socialni@inbaze.cz or on reception phone number +420 739 037 353

Other activities

- Mentoring
- Tutoring
- Courses of Czech language
- Community activities (groups for families with children, community dining, etc.)
- Lectures and workshops
- Tutorials for teachers and multicultural education programs for schools and public (e.g. Bedýnky příběhů – Boxes of Stories)

Information about all services, programs and activities might be found at:

InBáze, z. s.
Legerova 357/50, Prague 2, 120 00
Krumlovská 527/4, Prague 4, 140 00
info@inbaze.cz
www.inbaze.cz
phone number +420 739 037 353



PSYCHOSOCIAL COUNSELLING




SOCIAL COUNSELLING



LEGAL COUNSELLING



InBáze, z. s.
Legerova 357/50, Prague 2, 120 00
Krumlovská 527/4, Prague 4, 140 00
info@inbaze.cz
www.inbaze.cz
phone number +420 739 037 353
 InBáze



Help for families of migrants with children,

professional social counselling

and other services of InBáze

LEGAL COUNSELLING

PSYCHOSOCIAL COUNSELLING

SOCIAL COUNSELLING

ACTIVITIES FOR CHILDREN AND YOUTHS

INTERCULTURAL WORK



EVROPSKÁ UNIE
Evropské strukturální a investiční fondy
OP Praha – půl růstu ČR



EVROPSKÁ UNIE
Evropský sociální fond
OP Zaměstnanost



1 Social activation services for families of migrants with children

Programs for children and youths – leisure activities

We offer a safe environment for children and help with their integration into Czech society with an emphasis on educational needs, prevention and general development of children. Activities for children and young people are open to everyone without exception; perfect knowledge of Czech language is not a prerequisite. Service is provided free of charge.

We offer an opportunity to train Czech in an informal environment, to meet new friends and to spend free time actively.

Activities for younger children (5-11 years old):

Regular activities (usually once a week during the academic year):

- Art studio
A creative program, use of various art techniques
- Intercultural club
A diverse program (games, sport, creative activities, excursions)

Onetime activities

- Trips and workshops
- Weekend trips
- Camps

Contact information:

deti@inbaze.cz
+420 704 929 828

Aktivita pro starší děti a mládež (11-18 let):

Regular activities (usually once a week during the academic year)

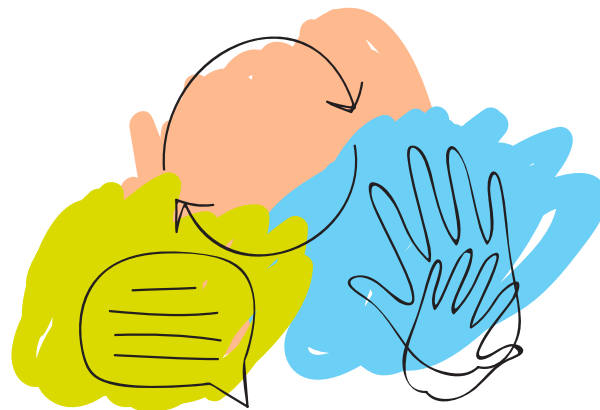
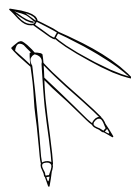
- Clubin Intercultural club
A diverse program (games, sport, creative activities, excursions)

Onetime activities (optional services)

- Trips and workshops
- Weekend trips
- Camps

Contact information:

clubin@inbaze.cz
+420 732 547 886
Facebook: @Clubinbaze



Services for families with children

Social counselling

Advice services in various situations regarding children and families:

- Dealing with schools or education providers
- Searching for schools, help with school enrolment, providing information about the Czech educational system
- Dealing with the state administration and offices, with health care providers and with other institutions
- Addressing perceptual and educational problems of children and youths
- Challenging financial situation of families (career, housing, debt situation, benefits)
- Critical family situations and relationship crises
- Looking for adequate Czech language courses for both children and parents
- Arranging of educational and leisure time programs for children and youths, etc.

Booking in advance is necessary and may be done via mail socialni@inbaze.cz or on reception phone number +420 739 037 353

Psychological counselling

- Individual therapeutic support in critical situations for families, children and youth
- Addressing behavioural issues of children and youths
- Help in critical family situations and relationship crises

Booking in advance is necessary and may be done via mail socialni@inbaze.cz or on reception phone number +420 739 037 353

The services are available in several languages. For more information see www.inbaze.cz and the Register of Social Service Providers at www.iregistr.mpsv.cz

2 Professional social counselling

We support migrants who are dealing with various life problems and situations regardless of their status of residence permit or nationality, who live in the district of the city of Prague. We offer social, legal and psychosocial counselling provided by qualified professionals on the foundation of clients' requests. The service is free of charge.

Social counselling

Help, support and assistance in matters of:

- Housing (house searching, dealing with house providers and lessors, supervision of tenancy agreements)
- Working experience and career (creating CVs, cover letters, searching for a job)
- Financial situation (social security – benefits, pension, sick pay)
- Health care and insurance
- Education (studies, nostrification, retraining)
- Residency in the Czech Republic (basic information)
- Dealing with offices of government and other institutions
- Mediation of follow-up and related services

Booking in advance is necessary and may be done via mail socialni@inbaze.cz or on reception phone number +420 739 037 353

Legal counselling

Individual consultation in matters of:

- Residency in the Czech Republic
- Family, Labour, Civil, Administrative and Social Law
- Mediation of follow-up and related (paid) services of the legal representative
- If necessary, the help with the processing of legal filings might be provided (especially the extension of the deadline, inactivity of the administrative authority, appeals, suit, criminal complaint, etc.)

Booking in advance is necessary and may be done via mail socialni@inbaze.cz or on reception phone number +420 739 037 353

Psychosocial counselling

- We offer individual therapeutic sessions where clients can talk about various problems with experienced therapists in a safe environment.

Booking in advance is necessary and may be done via mail socialni@inbaze.cz or on reception phone number +420 739 037 353

The services are available in several languages. For more information see www.inbaze.cz and the Register of Social Service Providers at www.iregistr.mpsv.cz

